

TECHNICAL RIDER AUDITORIUM

AUDITORIUM

The Theatre Viriato is a performance room, prepared to present Theatre, Dance and Music performances, with the capacity for 322 persons. This room is characterized by the typical proscenium stage: central fixed stage, audience with pit (front and dress boxes) and a Regie room.

MAP

LEVEL 0: Audience (regie at the back of the audience), Stage, Production Office, Technical Office;

LEVEL 1: Stage balcony, access to the grid;

LEVEL 2: Public Area, Light and Sound Regie.

STAGE

The stage has an orchestra pit with a lifting platform. This platform can be lifted from the orchestra pit level until audience or stage level with variable height.

The back stage has access through a loading dock door (3,50m width x 2,30m height).

STAGE DIMENSIONS

STAGE (useful area/box):

- Width Rear: **16,47m**
- Width Front: **12,80m**
- Height until the grid: **12,70m**
- Height until the stage balcony: **5,64m**
- Depth from the proscenium until the last pipe: **9,10m**
- Depth from the orchestra platform: **11,41m**
- Front aperture **8m**

PROSCENIUM

- Max. Height: **8,93m**
- Main border height: **variable**
- Width: **8,10m**

ORCHESTRA PIT

- Width: **7,95m**
- Depth: **1,9m**
- Max. Height (from stage level): **- 2,95m**

STAGE MACHINERY

- House Curtain(red) American way – manual opening
 - Motorised/Electrified Pipe System:
 - . 14 controlled by a console next to proscenium, with standard speed and the motors in the grid 400 Kg / pipe).
 - . 5 controlled by individual hand switch at the stage balcony, with two speed levels (300Kg / pipe)
-

PLATFORMS

- 8 Professional 22 – Nivoflex – 5 adjustable heights: **20, 40, 60, 80, or 100cm**
 - 12 platforms type Nivoflex – 5 adjustable heights **20, 40, 60, 80, or 100cm**
 - Dimensions of each: **200cm x 100cm**
 - Maximum charge capacity: **750 Kg/m2 = 1 653.75 pounds**
-

STAGE CLOTH

- 2 half velvet back cloth (5m x 10m)
 - 2 half flannel back cloth(7m x 7m)
 - 1 Flannel back cloth (7mx12m)
 - 1 White backdrop / cyclorama (12m x 7,5m)
 - 1 White backdrop PVC 12mx7m
 - 4 Flannel borders (12m x 3m)
 - 1 Main border (12m x 3m) (Fixed)
 - 1 House curtain (red velvet) American opening
 - 10 Flannel legs (2,95m x 7m)
-

STAGE FLOOR

- 7 black / white linoleum (1.60m x10m)

PROJECTION

- 1 square truss 30x30 cm, 9 m long and 5.5 m high.
- 1 perforated projection screen 8 m wide by 5 m high

LIGHT EQUIPMENT

CONSOLE 1: GRAND MA3 ONPC COMMAND WING XT + FADER WING

CONSOLE 2: AVAB ETC CONGO

DIMMERS (IN THE GRID): 216 x 16A

6 x 32A

LIGHTING		
6	PC ALTO STRAND	2000W
6	PC ADB C-201	2000W
30	PC ADB C-103	1000W
26	PC ADB C-51	650W
2	FRESNEL ADB SH-50	5000W
12	FRESNEL ADB F-101	1000W
15	PROFILE ROBERT JULIAT 614 SX 16°/35°	1000W
20	PROFILE STRAND OPTIQUE 15°/42°	1200W
28	PROFILE ADB DS-54 18°/38°	650W
36	PAR 64 (CP 60, CP 61 E CP 62)	1000W
10	PAR 36 PINSPOT	30W
4	CCT STARLETTE Z0C98 4 SQUARE CYCLO.FLOOD	1000W
6	INDIVIDUAL CYCLORAM	1000W
1	FOLLOW SPOT ROBERT JULIAT 10°/22°	1200W
6	ETC SOURCE FOUR 25°/50°	30W
6	IRIS PROFILE STRAND OPTIQUE 15°/42°	1000W
6	IRIS PROFILE ADB DS-54 18°/38°	1000W
6	GOBO HOLDER "M" PROFILE STRAND OPTIQUE 15°/42°	1200W
6	GOBO HOLDER PROFILE ADB DS-54 18°/38°	
15	GOBO HOLDER "A" PROFILE ROBERT JULIAT 614 SX 16°/35°	

LED		
12	STUDIO PAR LED 64 CAN 18 X 8WRG8A8W	CAMEO
10	ROBE ROBIN LED Beam 350	ROBE

EFFECTS		
1	STROB LIGHTTEC LS 1500	1000W
1	HAZEMAKER ROSCO	
1	SMOKE MACHINE JEM ZR44	

GUTTER ELECTRIFIED EC		
9 ELECTRIFIED PIPES (12 UNPAIRED CIRCUITS 16A): 1 FIXED PROSCENIUM and 8 REMOVABLE STAGE.		
10 GUTTERS MOBILE TOWERS (8X16A), 5 ON THE LEFT SCENE, 5 ON THE RIGHT SCENE.		

NOTES:

The pipe n.º 2 is used as a royal borders.

The pipe n.º 3 is used for the curtain.

If using house curtain, we recommend not using the rod n.º. 4 for the motion due to the proximity of the curtain, her struggle in projectors.

FILTERS

COMPANIES HAVE TO BRING THEIR OWN COLOUR FILTERS. THE TEATRO VIRIATO DOESN'T ASSUME ANY RESPONSIBILITY FOR THE LACK OF THIS MATERIAL.

SOUND EQUIPMENT

MICROPHONES

DYNAMIC

8	SM 58 LC	SHURE	
6	SM 57	SHURE	
1	BETA 52A	SHURE	
4	M 420 N(C)	BEYER DYNAMIC	
1	M 201 TG	BEYER DYNAMIC	
4	TGX 80	BEYER DYNAMIC	
1	TGX 50	BEYER DYNAMIC	
1	M88 TG	BEYER DYNAMIC	

WIRELESS

1	GLXD 4 / SM58	SHURE	
1	receptor SHURE ULXD4E G51 470-534 MHZ	SHURE	
1	emissor ULXD2 SM58 G51 470-534 MHZ		
6	EW512 G3 eW 500 receiver sk 500 sender	SENNHEISER	microphone - Lavalier SENNHEISER MKE2 - EW / Headset microphone - the t.bone HeadmiKe - O (with two ears)

CONDENSED

6	SM 81 - LC	SHURE	
3	BETA 98	SHURE	3 CLAWS AD98 E A98KCS
2	AKG PZM 30D	AKG	
2	PCC 160	AKG	
2	C414 B	AKG	
1	C1000 S	AKG	
1	MCE 83	BEYERDYNAMIC	
1	CK 703/CV720	BEYERDYNAMIC	
2	ATM350U	AUDIO-TECHNICA	

CONDENSED			
8	PRO 45	AUDIO-TECHNICA	
6	AT 2050	AUDIO-TECHNICA	
4	NTG - 4	RODE	Hiper cardioid (shotgun)
2	MX418	SHURE	
DI - BOXES			
10	AR-133	BSS AUDIO	ACTIVE
6	D1	BOSS	DI-BOX ACTIVE
AUDIOVISUALS			
1	CINEMA PROJETOIR DIGITAL 4K	CHRISTIE	Objective CP-4415-RGB
1	DIGITAL CINEMA SERVER - DOLBY	GDC - SR1000	
1	VIDEO PROJECTOR - EPSON	EB-PU2213B	FIXED - standard zoom lens ELPLM15
1	VIDEO PROJECTOR - PANASONIC	PT - EW640 5.800 LUMEN	Mobile - standard zoom lens 1,7 - 2,8:1
1	VIDEO PROJECTOR - PANASONIC	PT - D5700E 6000 LUMEN	Mobile - standard zoom lens 1,8 - 2,4:1
1	VIDEO PROJECTOR - PANASONIC	PT - VX605N 5500 LUMEN	Mobile - standard zoom lens 1.2 - 1.9:1
1	VIDEO TABLE BLACK MAGIC	ATEM TELEVISION STUDIO 4K8	
PROCESSOR SIGNAL			
EFFECTS			
1	EFFECTS PROCESSOR	SPX 2000	YAMAHA
EQUALIZERS			
4	GQ600	XTA	
SOUND CONTROL			
1	X32	BEHRINGER	
1	DIGITAL SNAKE BEHRINGER S-32	BEHRINGER	
1	DIGITAL QU 24	ALLEN HEATH	
1	DIGITAL SNAKE ALLEN & HEATH AR2412	ALLEN HEATH	
1	GI 2400	ALLEN HEATH	
1	EPM 12	SOUNDCRAFT	
1	SIGNATURE 12 MTK	SOUNDCRAFT	

PA			
FIXED PA			
4	FLEX POINT 12	MARTIN AUDIO	TOPS PA
2	SX 215	MARTIN AUDIO	SUB PA
2	FLEX POINT 4	MARTIN AUDIO	FRONT-FIELD
6	BLACKLINE X8	MARTIN AUDIO	SURROUND
4	EM26	MARTIN AUDIO	CLUSTERS
AMPLIFICATION			
1	IK81	MARTIN AUDIO	TOP - FOH
1	IK42	MARTIN AUDIO	SUB - FOH
1	VIA 2004	MARTIN AUDIO	SURROUND
1	USA 900	QSC	CLUSTERS
SOUND STAGE			
MONITORS			
5	WM 0.5 - 125 W	MARTIN AUDIO	STAGE MONITORS
4	STINGER 12 G2	LD SYSTEMS	
4	STINGER 15 G3	LD SYSTEMS	
2	SISTEMA IN-EAR SENNHEISER EW IEM G4	SENNHEISER	WHITHOUT EAR
AMPLIFICATION			
2	MCAUDIO E15	MC2	
3	EUROPOWER EP 4000	BEHRINGER	
MOBILE PA			
2	F 12+	MARTIN AUDIO	TOP
2	S18+	MARTIN AUDIO	SUB
1	USA 900	QSC	FRONT-FIELD
1	USA 1310	QSC	SURROUND
CABLES			
1	NEUTRIK / KLOTZ	MULTIPAR CABLE	24 + 8 (FOH) 24 + 8 (STAGE)

TRIPODS			
15		TRIPODS MICROFONE HIGH	
7		TRIPODS MICROFONE LOW	
4	K&M 210/9 BL	TRIPODS MICROFONE HIGH	
4	T K&M 252 BL	TRIPODS MICROFONE MEDIUM	
4	K&M 25950 BL	TRIPODS MICROFONE small	
3		TRIPODS FOR TABLE	
2	GOOSENECK XLR GMS23XLRB		Gravity
4		SOUND TRIPODS	

INTERCOM			
4	HOLLYLAND	SOLIDCOM C1-4S	FULL - DUPLEX WIRELESS INTERCOM
1	CANFORD	INTERCOM SYSTEM	5 POINT'S + CENTRAL FIX

NOTE: The system PA is fixed, so the speakers can't be moved.

BACKLINE			
1	ACUSTIC PIANO	STEINWAY MODEL B211	"LENGTH OF 2,11 METERS"

CONTACTS

TECHNICAL COORDINATION

PAULO MATOS > psam@teatroviriato.com

TEATRO VIRIATO | CENTRO DE ARTES DO ESPECTÁCULO DE VISEU
LARGO MOUZINHO DE ALBUQUERQUE – 3500-160 VISEU · PORTUGAL

Mobile. (+35) 965 521 550 | **tel.** (+35) 232 480 110

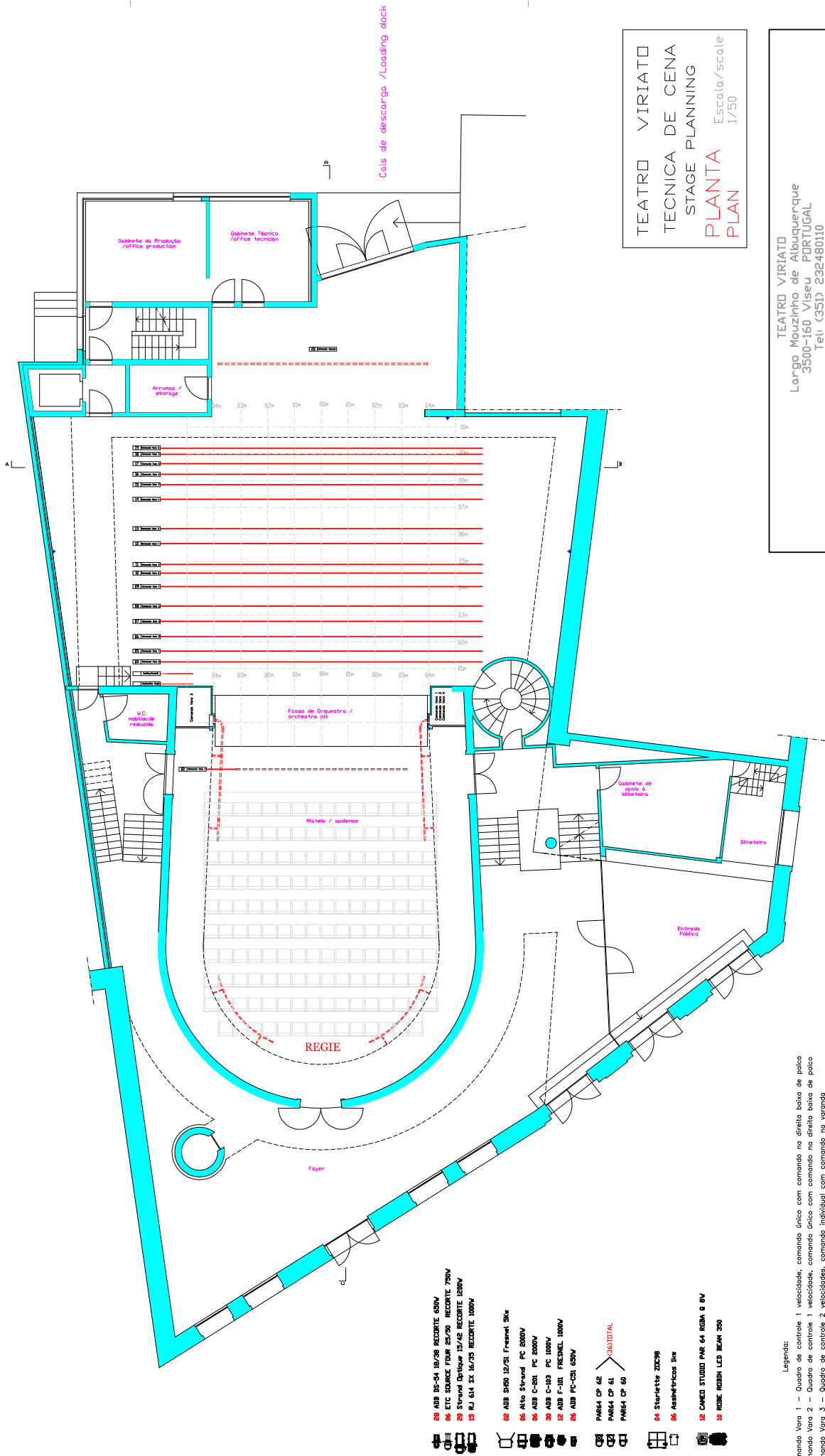
supported by

teatroviriato



This cultural device integrates:





TEATRO VIRIATO
TECNICA DE CENA
STAGE PLANNING
PLANTA Escala./scale
PLAN 1/50

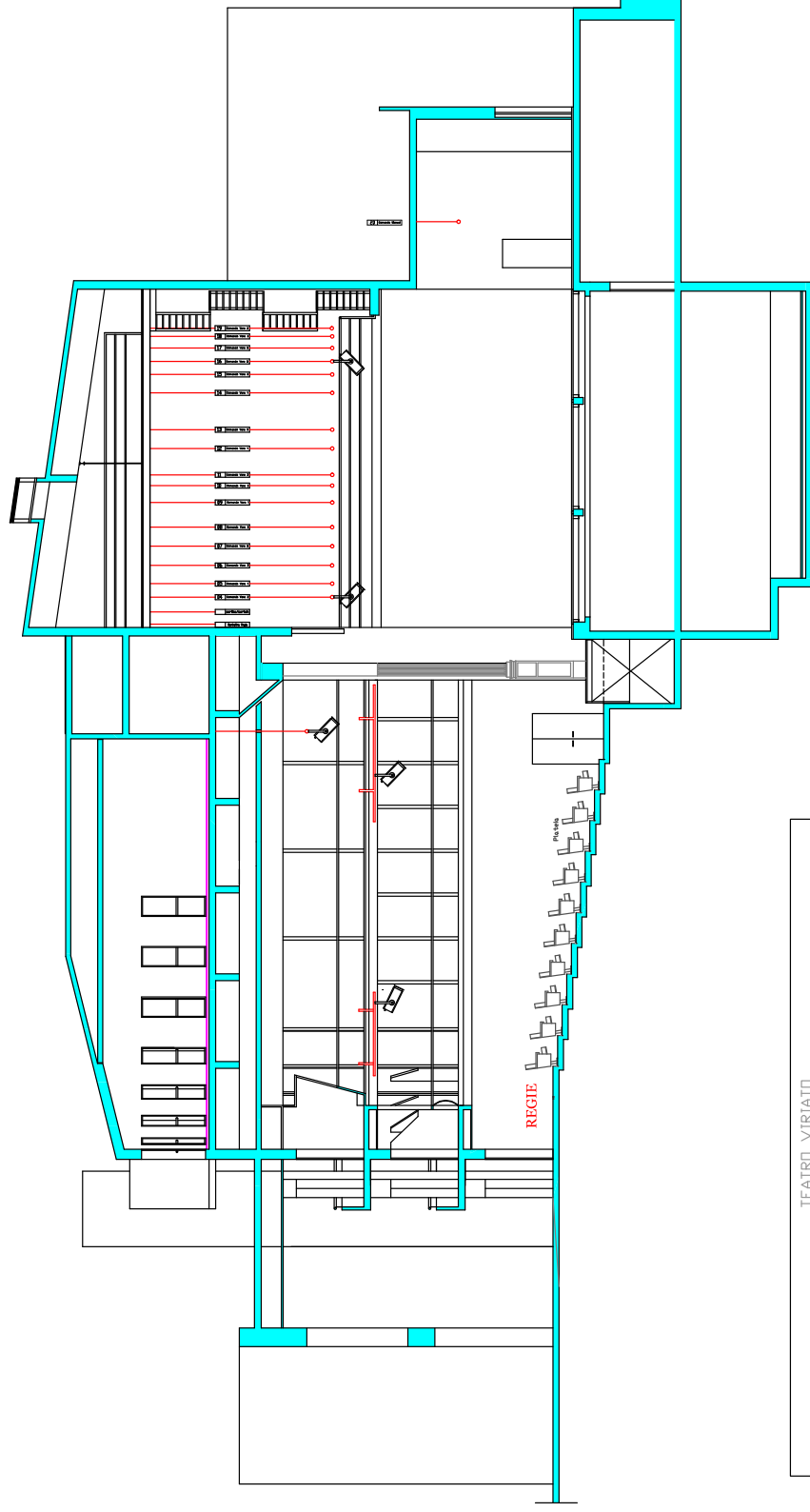
TEATRO VIRIATO
Largo Mouzinho de Albuquerque
3500-160 VISEU PORTUGAL
Teli (351) 232480110
www.teatroviriato.com/pt/menu/informacoes-gerais/informacoes-technicas/
www.teatroviriato.com

- 08 AUB 10-54 10/30 RECORTE 65W
- 09 ETC SOURCE FOLIE 20/30 RECORTE 70W
- 10 Strand Optique 15/42 RECORTE 100W
- 11 RJ 64 SX 16/23 RECORTE 100W
- 02 AUB 5160 12/21 Frame4 5W
- 03 Ato Strand PC 2000V
- 04 AUB C-201 PC 2000V
- 05 AUB C-160 PC 1000V
- 06 AUB F-101 FRESNEL 100W
- 07 AUB PC-C81 650W
- PAR64 CP 62
- PAR64 CP 61
- PAR64 CP 60
- 04 Starlette ZDC98
- 05 Assimetricos 1w
- 12 CAMEO STUDIO PAR 64 RGBW 0 BV
- 10 RIDE ROBIN LED BEAM 350

Legenda:
 Comando Voto 1 – Quadro de controle 1 velocidades, comando unico com comando na direita baixa de palco
 Comando Voto 2 – Quadro de controle 1 velocidades, comando unico com comando na direita baixa de palco
 Comando Voto 3 – Quadro de controle 2 velocidades, comando individual com comando na varanda
 Comando Voto 4 – Quadro de controle 1 velocidades, comando individual com comando na direita baixa de palco
Legenda:
 Pipe Command 1 – Table 1 speed control, single command with command in the lower right of the stage
 Pipe Command 2 – Table 1 speed control, single command with command in the lower right of the stage
 Pipe Command 3 – Table 2 speed control, with individual control command on the porch
 Pipe Command 4 – Table 1 speed control, with individual control command in the lower right of the stage

teatroviriato

ANNEXE



TEATRO VIRIATO
TECNICA DE CENA
STAGE PLANNING
PLANTA Escola/scale
PLAN 1/50

TEATRO VIRIATO
Largo Mouzinho de Albuquerque
3500-160 Viseu PORTUGAL
Tel(351)232480110
www.teatroviriato.com/pt/menu/informacoes-gerais/informacoes-tecnicas/
www.teatroviriato.com